

Water Features

Goleta Water District News – Summer 2021



Sunny Days Ahead

Get Your Landscaping Ready for Hot Weather

More than half of residential water use is typically outdoors, especially over the warm summer months. Explore water wise garden ideas for tips on using water efficiently, while reviving and refreshing your landscaping.

Plus: The District is moving to District-Based Elections.

More info inside.



QR Code

Learn about District-Based Elections at www.GoletaWater.com/districting

para más información www.GoletaWater.com/districting



Water Supply Update

As friends and family gather this summer, there's reason to feel some relief. Yet, in addition to the pandemic, there is another potential challenge on the horizon—namely growing concern about another historic drought.

This year brought a second dry winter with rainfall just over 10 inches, or half of normal, resulting in no meaningful inflow into Lake Cachuma, which is currently below 55% of its capacity. This spring the State Water Resources Control Board (SWRCB) announced that 95% of California is experiencing moderate to exceptional drought conditions. State reservoirs and the Sierra snowpack that they depend on are both well below average.

While these current conditions are not expected to significantly impact the District's ability to meet customer demand, ongoing warm and dry weather will certainly increase water use. The current two year outlook indicates that without additional rain next year the Goleta Valley could officially be back in a Water Shortage Emergency.

Even after the last drought ended, customer water use has remained at historic lows. An average household uses 55 gallons per person per day, well below the State's target of 110 gallons for indoor and outdoor use. Meanwhile, the District's operations continue to look very similar to those under the water shortage emergency, delivering a diverse supply of surface water and groundwater, augmented by state water and recycled water. While no additional watering restrictions are currently in place for the Goleta Water District, the Governor has asked for a voluntary 15% reduction in water use statewide. Please keep in mind that State prohibitions on water waste remain in effect, requiring the use of a hose nozzle, requiring that leaks be fixed within 48 hours and prohibiting the overspray of sprinklers onto sidewalks.

Clearly, it remains important to use water wisely, and to that end the District continues to support its customers in conservation. This newsletter features a number of landscaping tips that further assist all customers in saving water and money during the summer months.

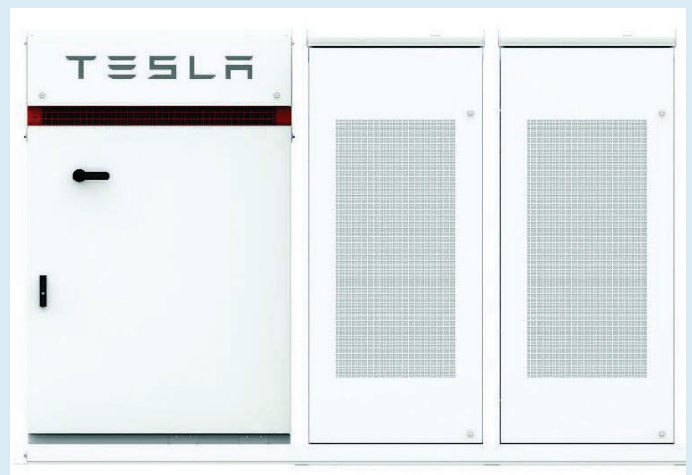
Thank you for your continued efforts to use water in a responsible and sustainable manner.

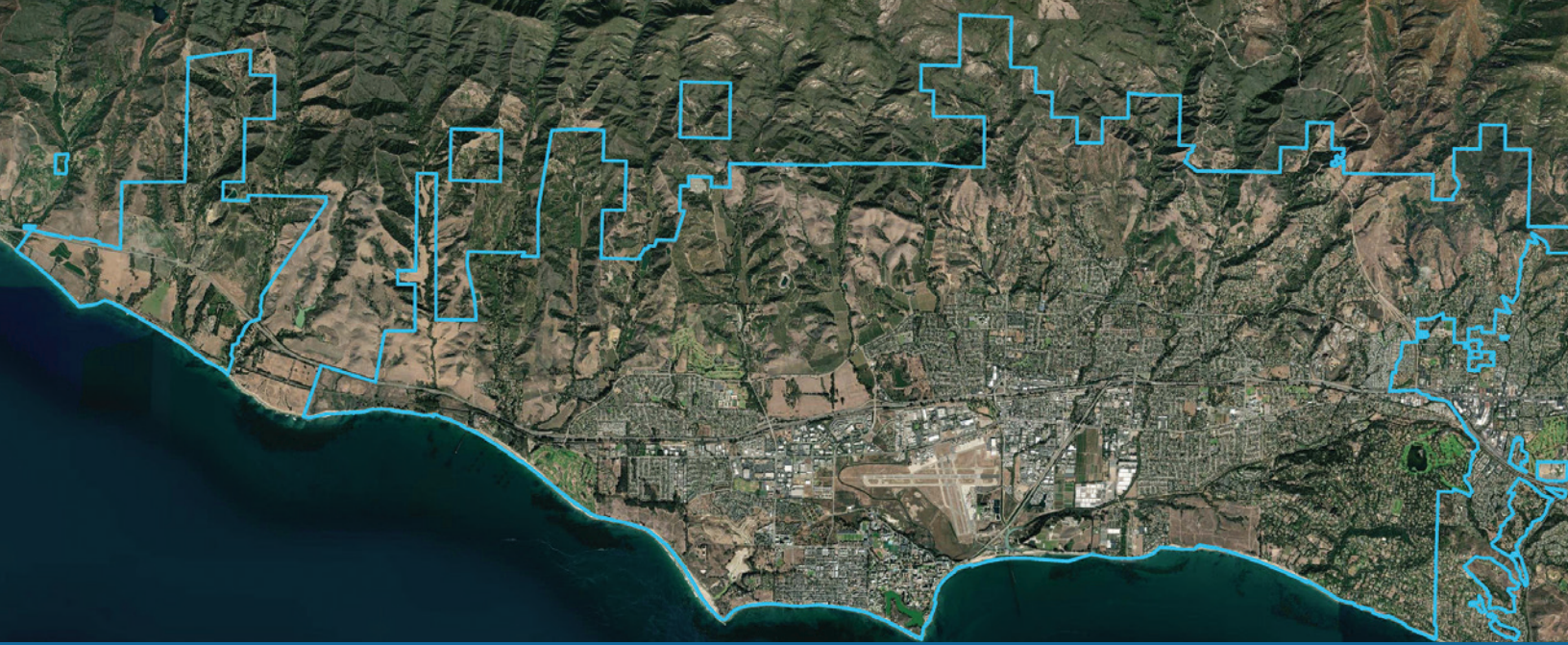
John McInnes

General Manager

Sustainability Partnership

Tesla has applied on the District's behalf for a grant to install battery backup power facilities at the Corona Del Mar Water Treatment Plant. The grant, valued at up to \$750,000, would provide for a Tesla Powerpack to keep the District in service even during power outages. This innovative project would reduce ongoing energy bills by an estimated 34%, while bringing the District a step closer to its sustainability goals. The grant is part of the California Public Utilities Commission's Self Generation Incentive Program, which provides incentives to support distributed energy systems for critical infrastructure subject to public safety power shutoff (PSPS) events associated with wildfires. Tesla would design the battery system, furnish and install all equipment, and operate and maintain the facilities for a 10-year period.





Transitioning to District-Based Elections

The Goleta Water District is transitioning from at-large elections, in which residents may vote for multiple candidates, to district elections, in which voters elect a single board member to represent their specific district or area. The first district-based election will take place in November 2022. The process of determining the boundaries for each of the five districts is currently underway.

Learn about the process, submit comments, and stay informed!

Q: When is this happening and what is the process?

A: The Board of Directors will hold a series of hearings in late 2021 and early 2022 to receive input from the public on districting and expects to adopt a final district map sometime in the spring of 2022. The new electoral districts will be drawn using data from the 2020 Census, as State law requires. A professional demographer will use the Census data and the detailed information it provides to guide the boundary-drawing process. The federal government has indicated that Census data will be released September 30, 2021. However, there have been several delays and due to this uncertainty, the District will set dates for hearings and workshops closer to when Census data is due to be available.

Q: How can I participate?

A: The Goleta Water District is currently taking input on the “communities of interest” that comprise the Goleta Valley to make the area unique. Communities of interest can include neighborhoods, ethnic or racial groups, and other characteristics that people in an area share and that the demographers should consider when drawing district boundaries. A survey can be found at www.GoletaWater.com/community-form, or comments can be submitted to districting@goletawater.com, mailed to 4699 Hollister Avenue, Goleta, CA 93117, or dropped in the **payment drop box**. Once the Census data is available, the District will hold more hearings to gather comments on draft maps the demographer proposes and any others the public might provide. Additional comments may be submitted at this time.

Q: Where can I find more information?

A: Meeting and hearing schedules will be posted on the website www.GoletaWater.com, and posted at District headquarters in our agenda case. Visit www.GoletaWater.com/districting for more info, including past agendas and presentations.



QR Code

Sunny Days Ahead!

Get Your Landscaping Ready for Hot Weather

Weather is variable and watering schedules should be too. Save water and money by adjusting your controller via the Watering % Adjust feature.

The Goleta Valley has a semi-arid climate marked by periods of drought. This places stress on both landscaping and the District's water supply—which includes Lake Cachuma, the Goleta Groundwater Basin, recycled water, and imported water from the State Water Project. Access to these diverse water supplies and the community's commitment to conservation help meet the water needs of the thousands of residential, commercial, and agricultural customers in the Goleta Valley, especially since during periods of drought some or all of these sources can be under stress. Water wise landscaping ensures that even during periods of low rainfall your garden will look its best. Water wise gardens often require less effort to maintain, with many needing no additional fertilizer, as well as reduced chemical use and runoff, making them more sustainable.

Outdoor irrigation typically accounts for nearly half of residential water use. Weather is traditionally the biggest factor driving that usage. Over the summer months, water use can vary by as much as 100% compared to cooler winter months.

To save water and keep your garden looking its best, adjust irrigation to match the weather, mulch plants to reduce evaporation, and check for leaks and overspray. If you haven't already, consider swapping out water intensive landscaping for water wise plants this fall. The following tips can help get your landscaping ready, whether for summer or drier days ahead.



Lake Cachuma during drought

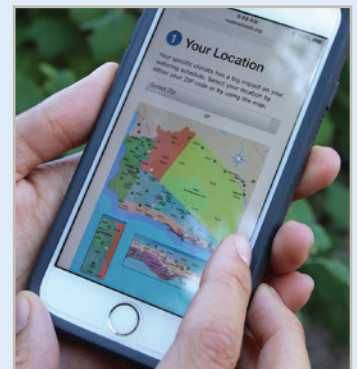


Water wise landscaping

How Much Water Does Your Garden Need?

This easy-to-use tool estimates the right amount of water for your landscaping and provides a recommended watering schedule. Just enter your zip code, the type of plants and soil, and the type of irrigation.

Visit: www.waterwisesb.org/calculator.c



Hot Weather Suggestions



Water early or in the evening to reduce water lost to evaporation.



During the summer months check trees and plants near sidewalks and driveways as they may need more water.



Establishing plants can be difficult during the summer. Give your plants the best start by waiting until fall to plant and take advantage of cooler temperatures and winter rains.

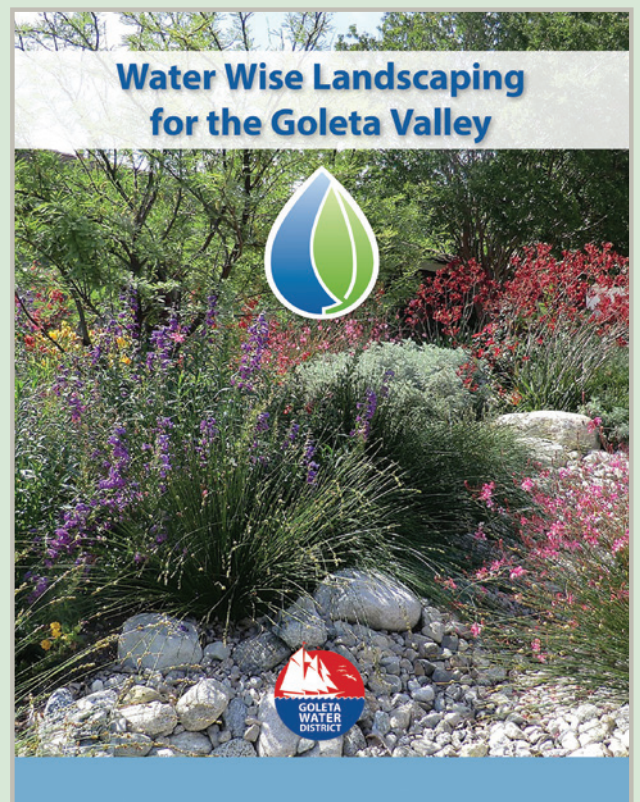
Water Wise Landscaping for the Goleta Valley

Considering changing out traditional landscaping for water wise alternatives? This brochure can help! Updated for the Goleta Valley, it contains garden design tips including plant selection, soil types, irrigation needs and tips.

Visit: www.GoletaWater.com/garden-brochure

Learn About Water Wise Gardens at WaterWiseSB.org

- Pick the perfect plant.
- Tour virtual waterwise gardens.
- Search by garden style or by features--from Mediterranean to traditional, front yards to park strips, find inspiration and examples that will work in a variety of spaces.
- Learn about soil, irrigation, and how to group plants by zone to create a water wise space that is beautiful and easy to maintain.



Water Supply Update

Even with growing drought concerns, the District's diverse water supply portfolio combined with extremely low per capita water usage means the District does not anticipate the need to declare a water shortage emergency this year under current projections.

Lake Cachuma 55%

With Lake Cachuma at less than 55% of capacity, the District is currently using its stored Cachuma water from the prior water year to meet customer demand. The District anticipates exhausting its stored water by August, at which point the District will begin utilizing its Cachuma water from the current water year to serve customers.



Lake Cachuma

5% State Water

With the State Water Project water allotment at only 5% statewide (one of the lowest in history), and with reservoirs across the state at very low water levels, little new supply is available from the State Water Project this year to supplement local sources. Fortunately, the District has nearly 5,000 acre-feet of State Water stored in San Luis Reservoir it will begin importing in July to augment its supplies.



San Luis Reservoir

850 Acre-Feet

With the District's groundwater wells in standby mode, the District has undertaken rehabilitation work at various locations to ensure they remain in operational condition when needed. Currently, the District is producing a minimal amount of groundwater necessary for routine flushing and maintenance. Starting in October, the District anticipates groundwater production providing for additional supply of up to 850 acre-feet in total in 2021.



San Marcos Well

Educational Resources



The District has many educational resources for teachers, community members and kids interested in learning more about where their water comes from and how to conserve. Check out videos highlighting the District's diverse water supply portfolio and learn how water is treated and delivered to homes and businesses in the Goleta Valley.

Visit: www.GoletaWater.com/conservation/educational-resources

Kids Corner

Kids can save water, too!

Curious how much water you use, but don't receive your water bill directly? This indoor and outdoor calculator estimates the major sources of water usage in the home: www.home-water-works.org/calculator



Water Word Search

Find the water-saving words listed below

Z L S H O W E R E F L R
T O O T H B R U S H E W
O D B A T H R O O M A A
I D R F A U C E T H K T
L T A P D R O U G H T E
E D I S H W A S H E R R
T B G A R D E N P F P L
H L A N D S C A P E F W

bathroom	garden	tap
dishwasher	landscape	toilet
drought	leak	toothbrush
faucet	shower	water

For more information on the District's water system check out the How It Works Video Series at www.GoletaWater.com/videos



GOLETA WATER DISTRICT
4699 Hollister Avenue
Goleta, California 93110
805/964-6761
info@goletawater.com

REMEMBER, YOU CAN PAY YOUR BILL ONLINE

Visit our website for more information

www.GoletaWater.com is a great resource
Water-Wise Landscaping Tips and Planting
Resources | Board Meeting Agendas and
Minutes | Information About Rates | Water Quality
and more...

PRSRT STD
U.S. POSTAGE
PAID
SANTA BARBARA, CA
PERMIT NO. 1215

Board of Directors

Kathleen Werner, President
Farfalla Borah, Vice President
Thomas Evans
Lauren Hanson
Bill Rosen

John McInnes, General Manager



Printed on FSC® post-consumer waste (PCW) recycled paper.

Follow us on social media:



Moving to District-Based Elections



The Goleta Water District is transitioning from at-large elections, in which residents may vote for multiple candidates, to district elections, in which voters elect a single board member to represent their specific district or area. The first district-based election will take place in November 2022. The process of determining the boundaries for each of the five districts is currently underway. A survey can be found at www.GoletaWater.com/community-form, or comments can be submitted to districting@goletawater.com, mailed to 4699 Hollister Avenue, Goleta, CA 93117, or dropped in the payment drop box.

Learn about the process, submit comments, and stay informed! More info at www.GoletaWater.com/districting or see the article inside.



QR Code

WaterSmart Customer Portal



Sign up for the District's online WaterSmart Portal to take advantage of convenient online tools, including AutoPay registration, and other helpful WaterSmart conservation tips and tools.

To sign up visit
<https://goletawater.watersmart.com>

Contact

Call us: (805) 964-6761

Visit our office: 4699 Hollister Ave.
8 a.m. to 5 p.m., Mon. – Fri.

Send us an email:
info@GoletaWater.com

Visit our website:
www.GoletaWater.com

The District Board of Directors meets on the second Tuesday of every month at 5:30 p.m. The public is always welcome. Because of the current public health emergency, all public meetings are being conducted by teleconference only. For more information on how to participate visit www.GoletaWater.com/agendas-and-minutes