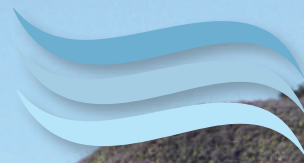


Water Features

Goleta Water District News – Winter 2022



Sustainability – Now and Into the Future

An update on the District's Sustainability Efforts

Learn more about the District's Sustainability Plan, and how it guides critical investments to reduce the environmental impact of operations, minimize costs, and enhance water supply reliability and emergency preparedness.

Plus: News About the District-Based Elections Process.

More info inside.



QR Code

Learn about District-Based Elections at www.GoletaWater.com/districting
para más información www.GoletaWater.com/districting

Reliable and Resilient Water Supply



California has officially entered another drought and many communities throughout the state are facing dire water supply challenges. Here in the Goleta Valley, a series of early storms have primed the Lake Cachuma watershed for runoff. However, even without additional rain, the District has enough supply to avoid the need for demand reduction requirements in 2022. This enviable position is due to years of strategic investment in, and the responsible management of a robust and diverse water supply portfolio as well as the exceptional conservation efforts that customers continue to embrace and demonstrate on a daily basis.

The District's water supply portfolio consists of the largest entitlement at Lake Cachuma, second largest entitlement in the Central Coast Water Authority's rights in the State Water Project, largest entitlement in the only adjudicated groundwater basin on the South Coast of Santa Barbara County, and recycled water. Having such a diverse portfolio allows the District to strategically draw from different sources under varying conditions, which ultimately enhances reliability during dry periods when availability of one source is reduced either locally or across the state.

Customer conservation is also key to avoiding water shortage emergencies. In fact, the District's water thrifty customers are among the most frugal in the state. According to data from the State Water Resources Control Board for calendar year 2021, the average residential District household uses 58 gallons per person per day, a full 38% below the statewide average of 94, and 23% below the Central Coast region average of 76 gallons.

In addition to maintaining and protecting its supply portfolio and continuing to support customer conservation, the District has completed or is in the process of implementing several other initiatives that will assist in maintaining a sustainable water system that is both reliable and efficient. More information on these initiatives can be found in this newsletter and on our website at www.goletawater.com.

Thank you for your interest in the District and all of the continued efforts to use water responsibly.

John McInnes

General Manager

Continued Conservation

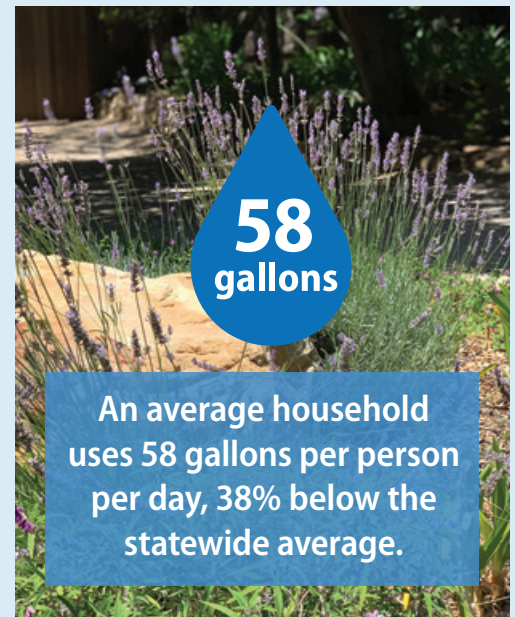
District customers continue to conserve and water use has remained low even after the end of the last historic drought.

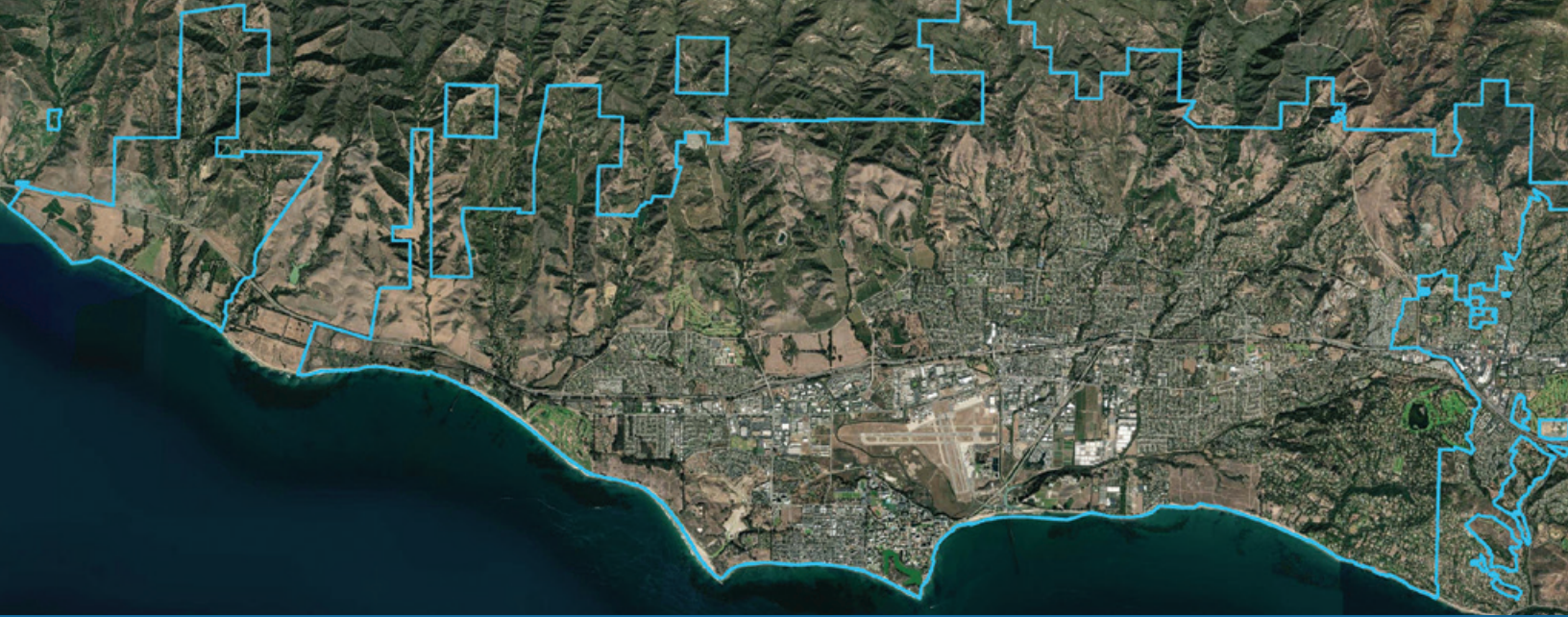
While the District is not currently in a water shortage emergency, the following state regulations remain in effect:

- ◆ Prohibition on excess watering causing runoff.
- ◆ Requirement to use a shutoff nozzle on a hose.
- ◆ Turn off irrigation within 48 hours of measurable rainfall (1/4 inch of rain or more).
- ◆ Don't wash sidewalks, driveways, buildings, structures, patios, parking lots, or other hard surfaced areas.

For a full list of restrictions visit:

www.calwater.com/conservation/drought/prohibited-uses-water





Maps for Transitioning to District-Based Elections

The Goleta Water District is transitioning from at-large elections, in which residents may vote for multiple candidates, to district elections, in which voters elect a single board member to represent their specific district or area. The first district-based election will take place in November 2022.

A series of four public hearings were held in the fall and winter to review new maps drawn by the District's demographer and local residents, providing the public an opportunity to submit comments and suggestions.

Districting is important because it will determine how your neighborhood gets represented. The community is encouraged to submit comments on the districting process. Go to www.goletawater.com/districting for more info. Comments can be submitted to districting@goletawater.com, mailed to 4699 Hollister Avenue, Goleta, CA 93117, or dropped in the payment drop box.

Q: What is a District-Based Election?

A: In a district-based election system, residents vote for one person to represent the particular electoral district or area where they live. The maps used to determine the boundaries of each of the five districts are currently being considered. Candidates running for office must live within the electoral district they seek to represent.

Q: When will the final maps be adopted?

A: The Board of Directors tentatively plans to adopt a final map at their March 8, 2022 meeting. By State law, a map must be adopted by May 11, 2022, or no later than 180 days before an election.

Q: How will I know which District I am in?

A: Starting with the November 2022 election, the voting district in which you are eligible to vote and the candidates for that voting district will appear on the ballot of all registered voters when they receive a ballot either by mail or at their polling place. The final maps will be posted on the District's website under the *About* section.

Q: Where can I go for more information?

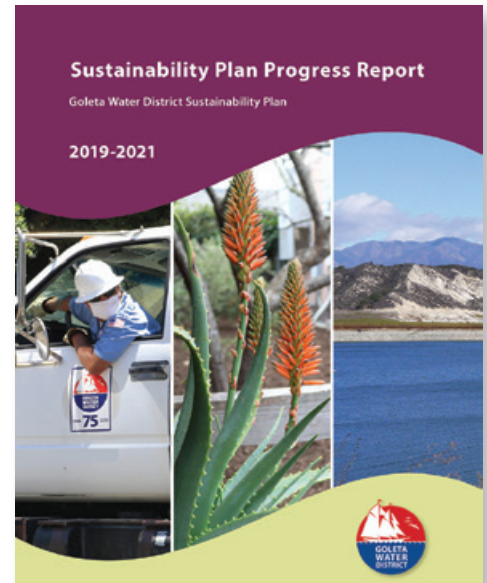
A: Visit www.goletawater.com/districting for information about the process and information en español. You may also call (805)879-4621 or send an email to districting@goletawater.com



QR Code

Planning for Sustainability

Meeting short-term production targets and long-term sustainability goals requires strategically balanced investment in all areas of District service delivery. The District's first Sustainability Plan was adopted by the Board of Directors in June 2012, and is updated regularly through progress reports. Each progress report provides an overview of how District initiatives, activities, and operations produce outcomes that contribute economic, environmental, and social benefits, and support sustainable water service delivery. As a water provider, an obvious focus and investment priority is the water supply, treatment, and distribution system that delivers water to over 87,000 people in the Goleta Valley. In addition to water supplies, smart investments are made across all categories of District operations, from its daily business operations and customer service to the long-term maintenance of its administration buildings and fleet of vehicles and heavy equipment.

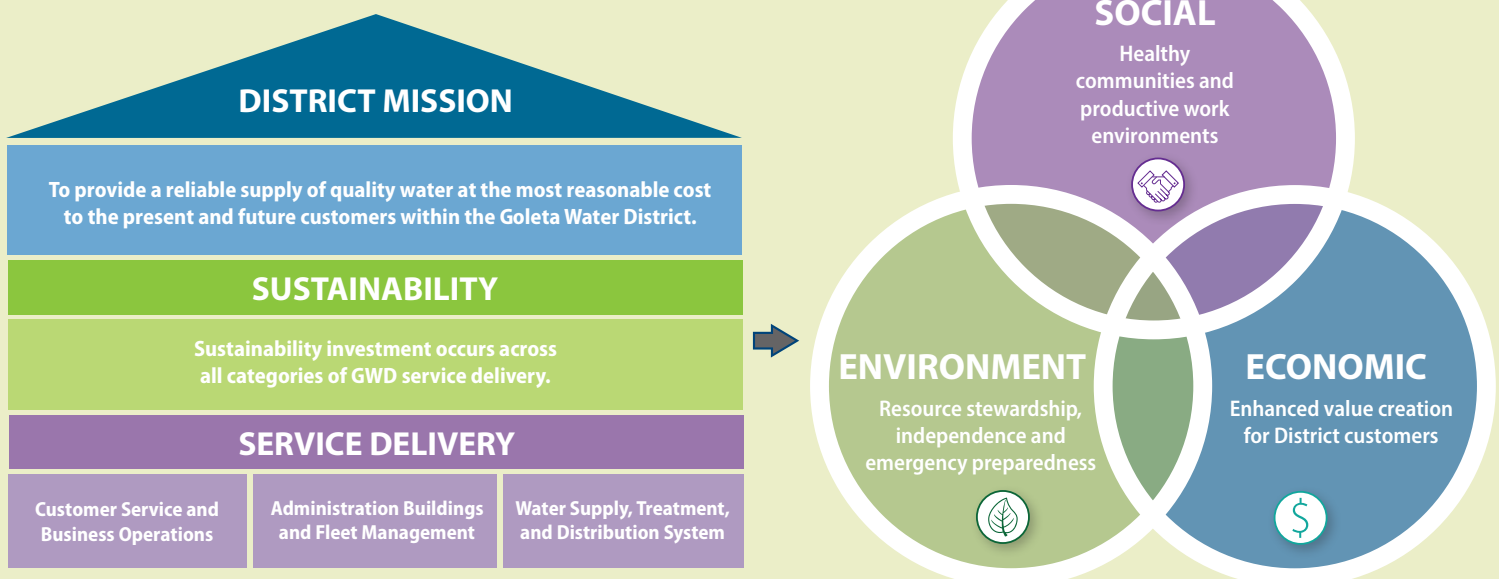


Since the plan was adopted, 63 initiatives have been successfully implemented, and an additional 17 are being developed or are underway. For the latest update and to learn more about how sustainability is built into the water service provided to customers, visit www.goletawater.com/sustainability.

Guiding Principles

The District's Sustainability Guiding Principles are a central component of upholding the District's mission to provide a reliable supply of quality water at the most reasonable cost to present and future customers. Developed to embrace the three components of sustainability – economic, environmental and social – the guiding principles provide the foundation for actions that support a sustainable service delivery model. Even as the District faces new challenges and opportunities in an evolving service delivery environment, key initiatives that put the Guiding Principles into action will help the District continue to achieve outcomes that provide economic, environmental, and social benefits.

How it Works



Now and Into the Future

These highlights feature some of the many projects and initiatives underway.

Electric Fleet Vehicles and Charging Stations – The District has acquired three electric vehicles as part of its Fleet and Construction Equipment Replacement Program. Since the electric vehicles were put into service in July 2019, the District has avoided using approximately 685 gallons of fuel, saved approximately \$2,384 in associated fuel costs and prevented the generation of an estimated 6.08 metric tons of greenhouse gas emissions. From July 2019 – June 2021 the District’s vehicle charging station registered 185 unique users, an increase of 36% since 2018, and prevented 12,069 kg in greenhouse gas emissions, increasing nearly 70% between FY 2019-20 and FY 2020-21.



Digitizing the District – The District continually assesses opportunities to streamline administrative operations and move to paperless processes both as a best practice and as part of its sustainability efforts. The need to develop additional business solutions and modify current processes to avoid disruptions to the existing workflows and maintain seamless customer service increased dramatically as a result of the COVID-19 Pandemic, with employees working remotely and offices closed to the public. A number of these projects are featured in more depth in the 2019-21 progress report at www.goletawater.com/sppr.

A Reliable and Resilient Water Supply – Over the years, the District has made significant investments in its water treatment and distribution system to ensure quality water can be reliably delivered to all areas of the community under varying circumstances. Ensuring continued access to its diverse water supply portfolio has been key to this effort, with investment in the different wells, pump stations, and infrastructure to deliver groundwater throughout the system as surface water supply reliability diminished.

Offsetting Traditional Non-Renewable Energy Use

Future projects are increasingly focused on controlling operational costs related to the increased energy needs associated with accessing the District’s diverse supply portfolio. Turn the page for an in-depth look at how water and energy usage are linked.



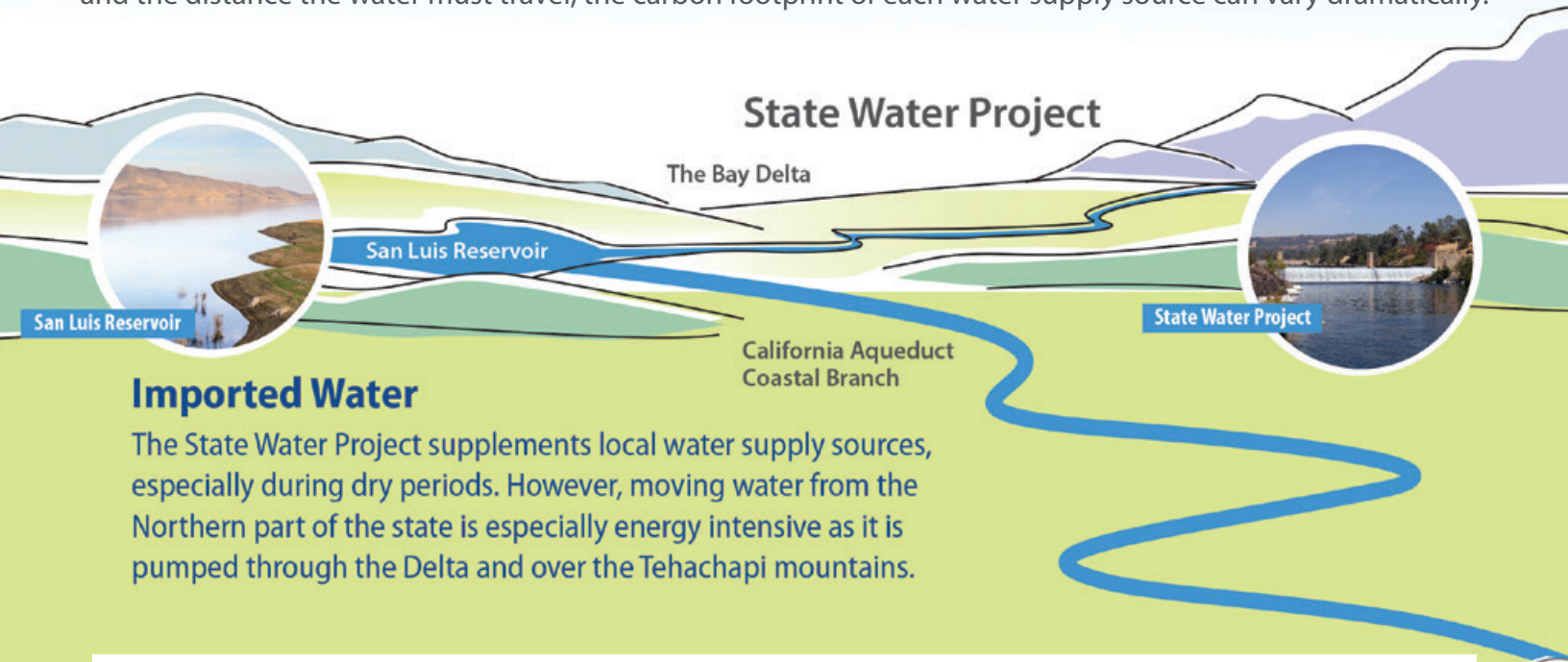
SUSTAINABILITY PLAN AND PROGRESS REPORTS – 2012 TO 2021



Learn more at www.goletawater.com/sustainability

Where Your Water Comes From and the Energy it Uses

Energy might not be the first thing you think of when it comes to water, but the need to pump, convey and treat water means that water and energy use are inextricably linked. Depending on the treatment processes required, and the distance the water must travel, the carbon footprint of each water supply source can vary dramatically.



Imported Water

The State Water Project supplements local water supply sources, especially during dry periods. However, moving water from the Northern part of the state is especially energy intensive as it is pumped through the Delta and over the Tehachapi mountains.

A Diverse Water Supply Requires Investment in Sustainable Energy

The Goleta Valley has a semi-arid climate marked by periods of drought alternating with periods of moderate to heavy rainfall. Using a variety of water sources is vital in this dry environment, but accessing this diverse supply requires increased energy use. Pumping groundwater and delivering water from the State Water Project both take considerable amounts of energy. By contrast, surface water supplies from Lake Cachuma are delivered to the Corona Del Mar Water Treatment Plant and customers using a gravity fed system that is highly energy efficient.

This water energy nexus is a key driver of the District's new Net Zero Initiative. The District is investigating the feasibility of a system-wide renewable energy project to install solar power throughout the District's facilities capable of generating enough clean power to offset normal annual electricity use. To achieve net-zero, the District must generate at least 2 million kWh of electricity each year using on the order of 4,000 solar panels. A Request for Proposals has been issued to select a firm to design, construct, maintain and finance the solar systems through a Power Purchase Agreement.

These projects complement existing District solar installations at San Ricardo Well and San Marcos Reservoir, as well as a water turbine in the distribution system at Garrett Van Horne Reservoir that generates up to 240,000 kWh per year.

The District has also received a state grant to assist with installing renewable solar and battery backup power systems at six of its reservoirs. This sustainable alternative to diesel generators will ensure continued facility operations during emergencies and public safety power shutoff events. Once completed, District operators will also no longer have to fuel, deliver, and deploy diesel generators to remote reservoir sites during wildfires and other emergencies.

This is in addition to partnering with Tesla to secure a grant to install battery backup power facilities at the Corona Del Mar Water Treatment Plant. The grant, valued at up to \$750,000, would provide for a Tesla Powerpack to keep the District's treatment plant in service during power outages and to reduce costs when peak-use rates are in effect. This innovative project would reduce the plant's energy bills by an estimated 34%, while bringing the District a step closer to its sustainability goals.

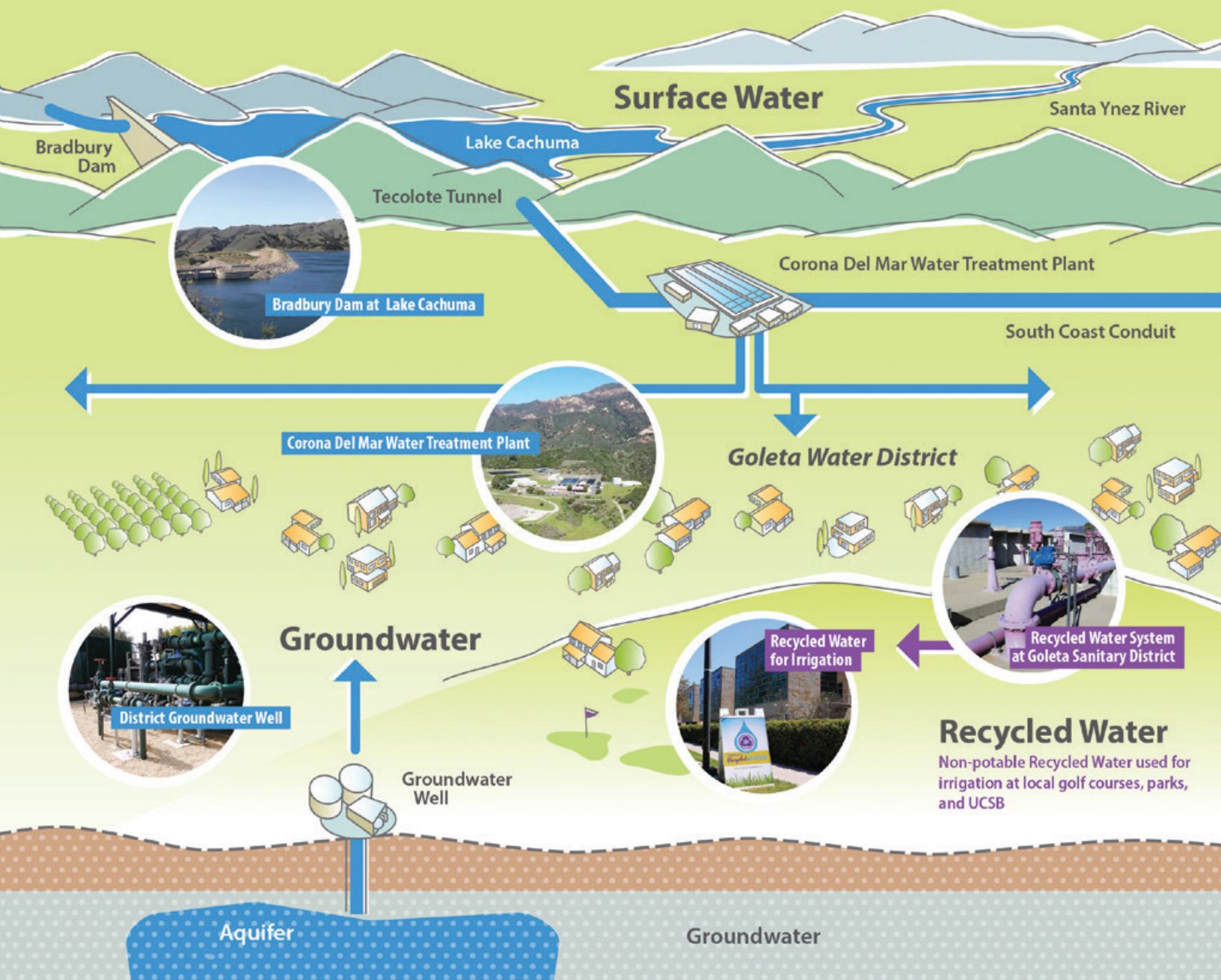
Moving forward, the District will continue to explore options for generating sustainable energy, or even shifting the timing of some water supply and treatment operations to periods when renewable sources provide higher shares of energy supply.

The Water-Energy Nexus

Many drought mitigations, such as developing diverse local water supplies, can actually increase energy use. How the District balances this increased need for energy with enhanced water reliability is an emerging challenge that will guide sustainability efforts over the coming decade.

Local Water Supplies

The majority of the District's water supply comes from local sources, which offer increased reliability. While groundwater and recycled water are more energy intensive than surface water supplies, they still typically have a lower total energy footprint compared to imported sources moved over long distances.





GOLETA WATER DISTRICT
4699 Hollister Avenue
Goleta, California 93110
805/964-6761
info@goletawater.com

REMEMBER, YOU CAN PAY YOUR BILL ONLINE

Visit our website for more information

www.GoletaWater.com is a great resource
Water-Wise Landscaping Tips and Planting
Resources | Board Meeting Agendas and
Minutes | Information About Rates | Water Quality
and more...

PRSR STD
U.S. POSTAGE
PAID
SANTA BARBARA, CA
PERMIT NO. 1215

Board of Directors

Kathleen Werner, President
Farfalla Borah, Vice President
Thomas Evans
Lauren Hanson
Bill Rosen

John McInnes, General Manager

 Printed on FSC® Mix Certified paper from responsible sources.

Follow us on social media:



Moving to District-Based Elections



Starting in November 2022, the Goleta Water District will transition from at-large elections, in which residents may vote for multiple candidates, to district elections, in which voters elect a single board member to represent their specific district or area. Districting is important because it will determine how your neighborhood gets represented. The community is encouraged to submit any other comments on the districting process for the District's consideration. Find more details inside.

Visit www.goletawater.com/districting for information about the process and information en español. You may also call (805)879-4621 or send an email to districting@goletawater.com



QR Code

Water Supply Update



Even without additional rain, the District has enough supply to avoid the need for demand reduction requirements in 2022.

Even as the District continues to deal with the ongoing COVID-19 Pandemic, there is a new challenge on the horizon—namely growing concern about another historic drought. Regardless of what the next year brings, with its diverse water supply portfolio and continued conservation by customers, the District remains well positioned to navigate this critical period.

Contact

Call us: (805) 964-6761

Office hours: 4699 Hollister Ave.
8 a.m. to 5 p.m., Mon. – Fri.

Send us an email:
info@GoletaWater.com

Visit our website:
www.GoletaWater.com

The **District Board of Directors** meets on the second Tuesday of every month at 5:30 p.m. The public is always welcome. Because of the current public health emergency, all public meetings are being conducted by teleconference only. For more information on how to participate visit www.GoletaWater.com/agendas-and-minutes